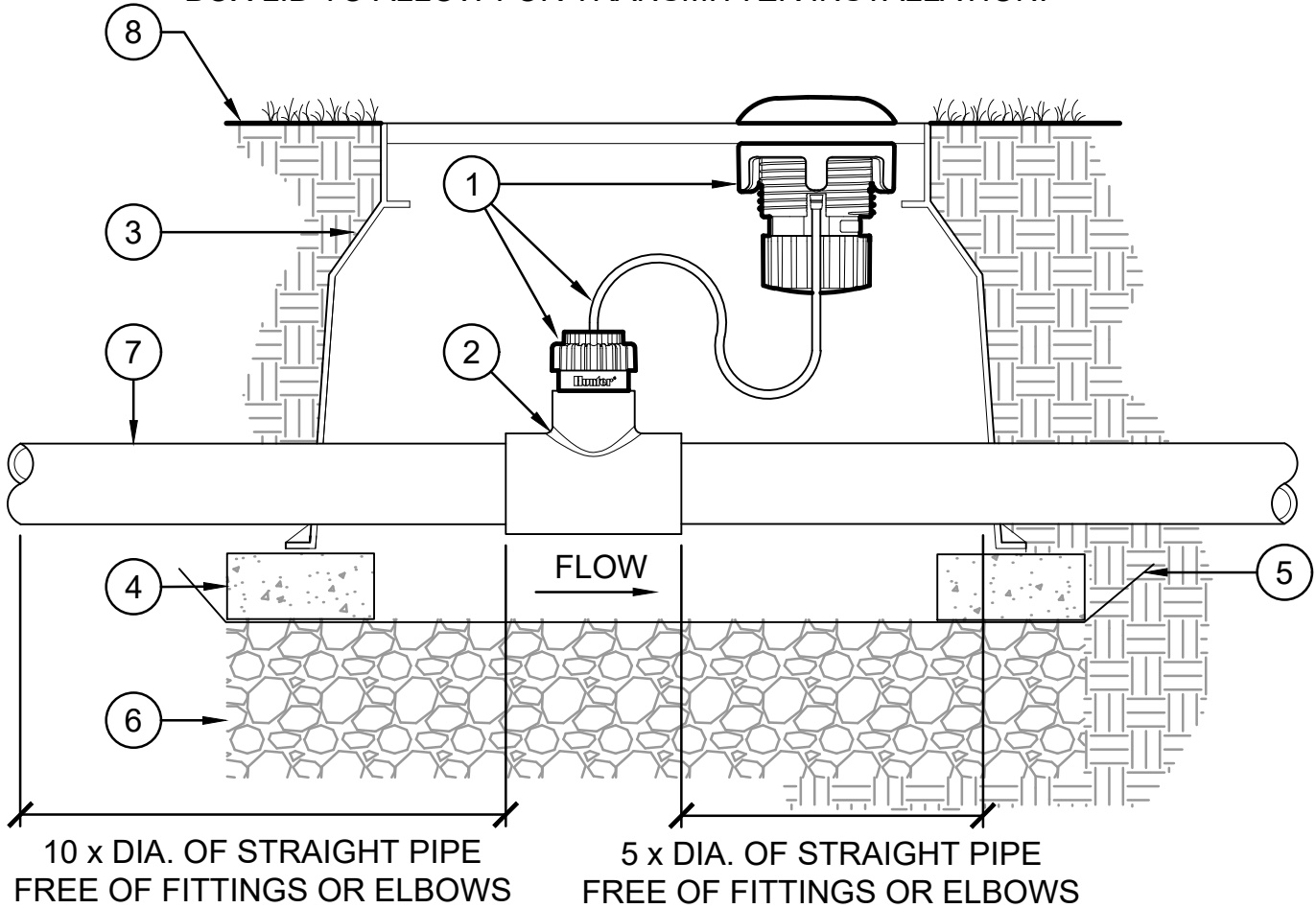
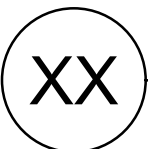


NOTE: SAWCUT A 3-1/4" (8.255cm) DIA. HOLE IN TOP OF VALVE BOX LID TO ALLOW FOR TRANSMITTER INSTALLATION.



DETAIL LEGEND:

- ① WIRELESS FLOW SENSOR, CABLE, AND TRANSMITTER PER PLAN (WFS)
- ② RECEPTACLE TEE (FCT), SIZE PER PLAN
- ③ RECTANGULAR VALVE BOX PER PLAN
- ④ BRICK SUPPORTS AT EACH CORNER (4)
- ⑤ FILTER FABRIC
- ⑥ GRAVEL BASE, DEPTH PER PLAN
- ⑦ MAIN LINE AND SOIL COVER PER PLAN
- ⑧ FINISHED GRADE



WFS FLOW SENSOR

Hunter® S.WFS.01

NOT TO SCALE

REV: 2019-08-07